

SHANNON LIBRARY BUILDING GUIDE



The Rotunda was the library at UVA for more than a century, until a new library was built to meet the needs of a growing university. Opened in 1938, it served as UVA's main library for more than 80 years, and underwent a major renovation beginning in 2020.

In 2024 the building reopened as The Edgar Shannon Library. The renovation refurbished the historic envelope, created five new floors of mixed-use space as well as a new basement, and added all new HVAC, electricity, fire suppression, plumbing, and other infrastructure. It improves accessibility and sustainability, and it creates a much better environment for both people and collections in the building.

Scan QR code or visit
at.virginia.edu/library-map
for detailed interactive
floorplans of the library.



WHAT'S IN THE BUILDING?

Shannon Library is home to UVA's social sciences and humanities collection, housed in the stacks and on the first floor of Clemons Library — an internal passage connects Shannon to Clemons, and users can move freely with materials between the buildings. There are also materials outside of the central stacks, including the Flowerdew Hundred archaeological and records collection; Government Documents (the UVA Library is a U.S. federal regional depository); the Library's renowned Tibetan Collection; the Stanley and Lucie Weinstein Buddhist and Asian Studies Library of nearly 11,000 volumes; and the collections shelved in the Reference, Periodicals, & Oversize Room.



In addition to collections there are spaces to take care of them. The building houses workrooms for evaluating materials and performing routine maintenance, as well as spaces and specialized equipment for digitization of materials, AV reformatting, AV and digital preservation, and collections and Special Collections conservation. The two conservation labs are fronted by windows through which viewers can see conservators at work. There's also a remediation lab where materials can be treated for pests and/or mold.

Other specialized spaces include the Digital Humanities Center, which consists of the Scholars' Lab and the Institute for Advanced Technology in the Humanities. The Scholars' Lab is the Library's digital humanities community lab, which includes a makerspace, and IATH is dedicated to exploring and developing information technology as a tool for humanities research. Other spaces include a large seminar/event room, conference rooms, and classrooms. The building is also equipped with three elevators, accessible restrooms, and a lactation room.

Shannon Library has a wide variety of reader seating. Spaces in the historic envelope include Memorial Hall, the Reference, Periodicals, & Oversize Room, and the McGregor Room. There are two large Study Courts, several reading rooms, study carrels, reservable group study rooms, and seating in and around the stacks. Shannon Library also has a lounge and kitchenette exclusively for graduate students.

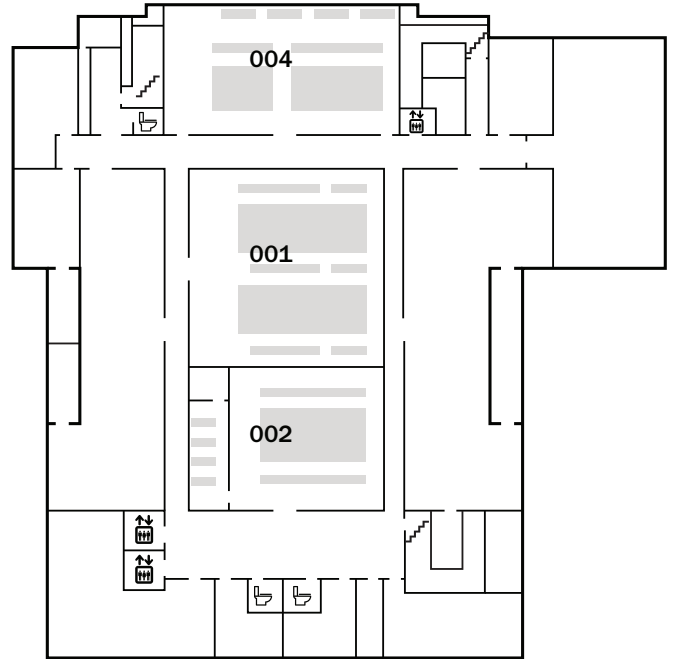
The building houses more than 100 UVA Library staff, the Center for Digital Editing, the Bibliographical Society of the University of Virginia, the Papers of George Washington, the Papers of James Madison, and Rare Book School — the preeminent institution for students of all disciplines and skill levels to study the history of written, printed, and digital materials.

FLOORPLAN LEGEND

 Stairs	 Elevator
 Women's Restroom	 Men's Restroom
 All Gender Private Restroom	 Changing Table
 Shower	 Lactation Room
 Charging Station	 Scanner
 Printer	 Computers
 Vending Machines	

All building restrooms are wheelchair accessible. Northwest restrooms on B, 1, 3, 4, & 5; southeast and southwest restrooms on 4; and cafe restrooms on 2 are equipped with automatic push button door openers.

B The basement holds closed workrooms for Flowerdew Hundred, Rare Book School, and Library collections. The basement is staff-access only and the Library and Rare Book School workrooms are closed to visitors. The Flowerdew Hundred room is open to students, researchers, and visitors by appointment (email lb-flowerdew@virginia.edu for information). The basement also contains building storage and mechanical rooms.



DIRECTORY

Departmental Space

Flowerdew Hundred Collections Workroom	004
Library Collections Workroom	001
Rare Book School Collections Workroom	002

1

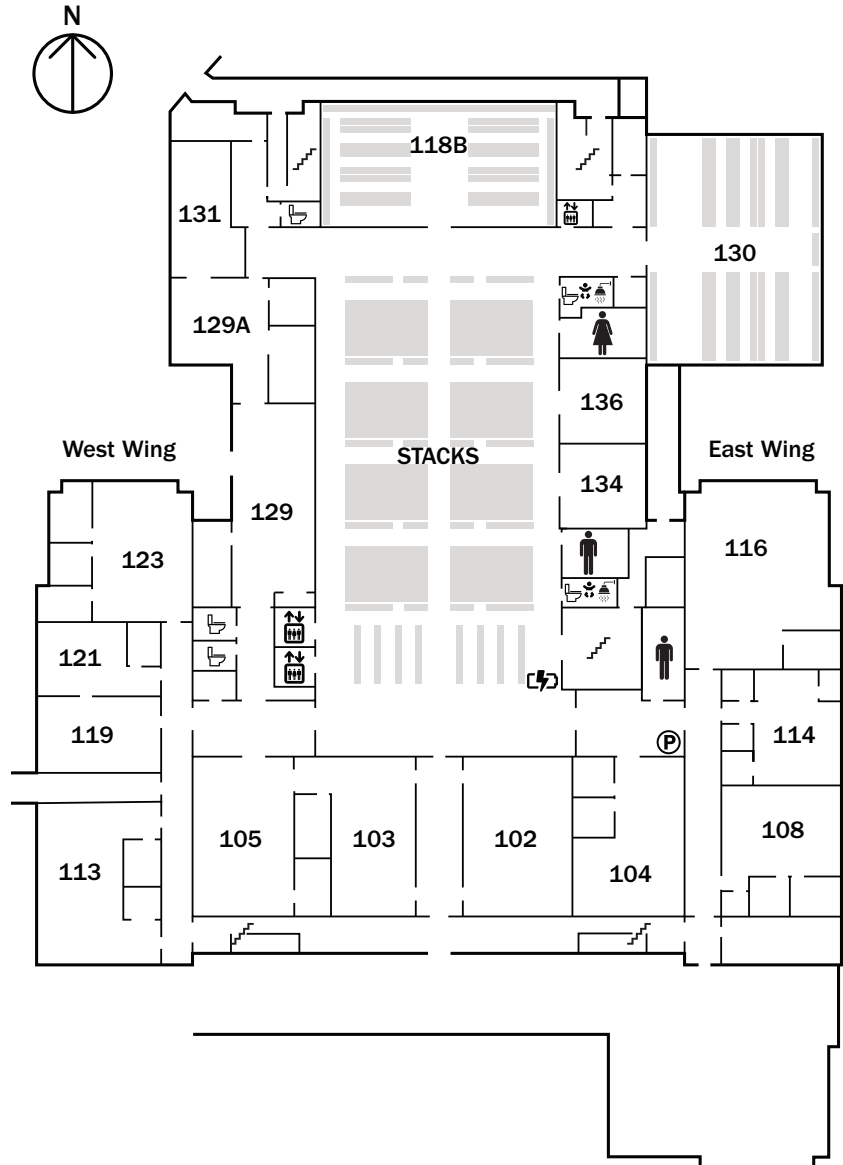
In addition to stacks, the first floor includes the Library's Tibetan Collection as well as Government Documents. Preservation Services' Remediation Lab is here, and the floor also contains study carrels, a conference room, and departmental space for Library staff.

DIRECTORY

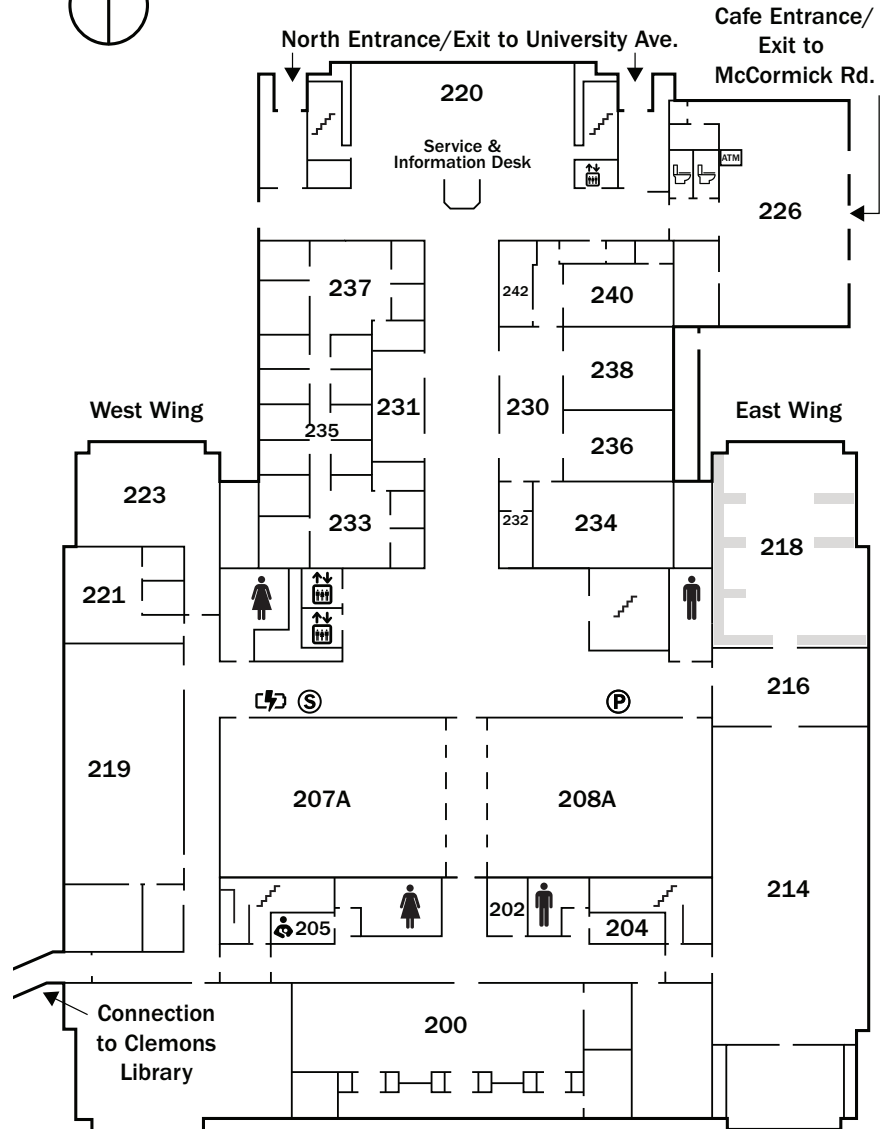
Conference Room	134
Government Documents	130
Study Carrels	136
Tibetan Collection	118B

Departmental Space

Collections Management	119, 121
Digital Production Group	108, 116
Interlibrary Loan (ILL)	123
Library Express On-Grounds (LEO)	105
Loading & Receiving	129A
Mail Room	129
Metadata & Discovery Services	113
Remediation Lab	131
Resource Acquisition & Description	102, 103
Scholarly Resources & Content Strategy (SRCS)	123
Stacks Management	104
Staff Lounge	114



2 On this level are the north entrance, an entrance through Cav Commons (housing Saxbys cafe), and an interior connector to Clemons Library. The Z Society Reading Room and a Service & Information Desk are here as well. The central space on this floor holds the offices, workspaces, and seminar rooms of Rare Book School, and the central hallway contains gallery space. There are two large Study Courts. The east wing contains the McGregor, Lamsam, and Weinstein Rooms. Preservation and conservation spaces are on this floor, as well as a Library classroom and the office of the Bibliographical Society of the University of Virginia.



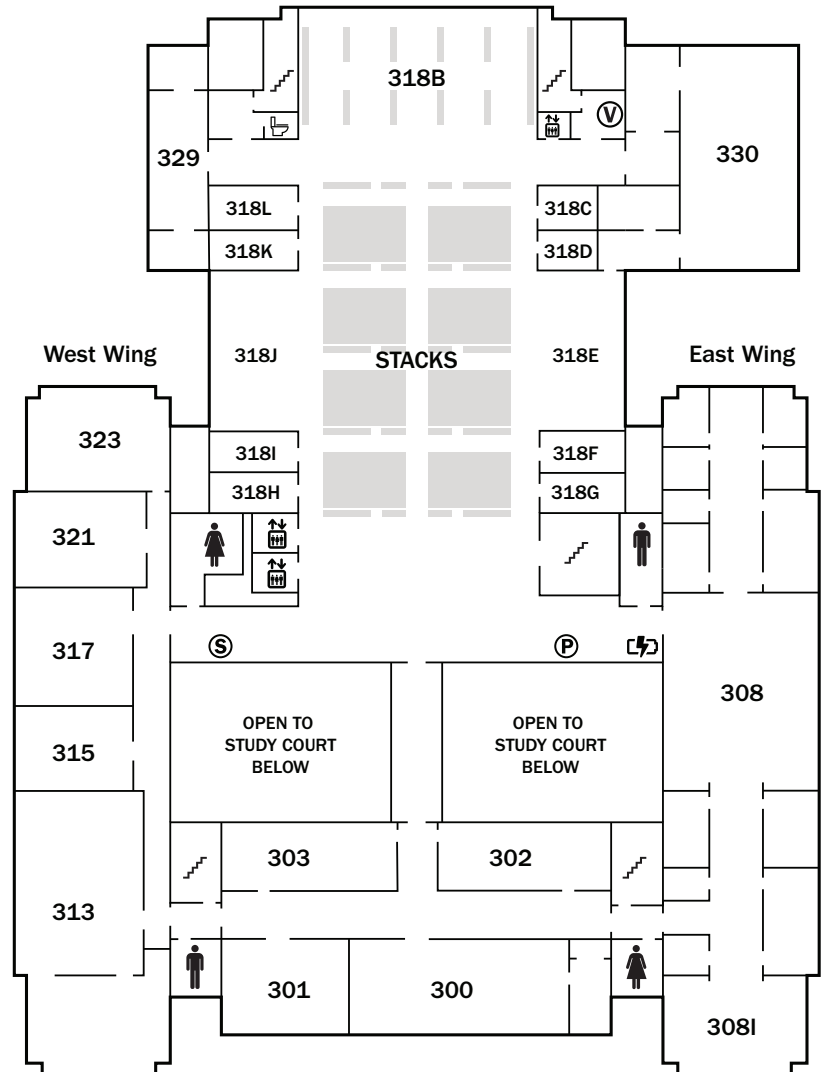
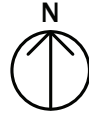
DIRECTORY

Cafe & ATM	226
Classroom	223
Lactation Room	205
Lamsam Room	216
McGregor Room	214
Rare Book School	230-242
Service & Information Desk	220
Study Courts	207A, 208A
Weinstein Room	218
Z Society Reading Room	220

Departmental Space

AV & Digital Preservation	221
AV Reformatting	204
Bibliographical Society	202
Collections Conservation	219
Special Collections Conservation	200

3 The third floor contains stacks, a large seminar room, a classroom, a conference room, three reading rooms, study carrels, reservable group study rooms, and the graduate student lounge. The Digital Humanities Center (Scholars' Lab and Makerspace and the Institute for Advanced Technology in the Humanities) are housed here. The third floor also contains the Center for Digital Editing, the Papers of George Washington, and the Papers of James Madison.



DIRECTORY

Classroom	317
Conference Room	323
Digital Humanities Center	
Institute for Advanced Technology in the Humanities (IATH)	300
Scholars' Lab & Makerspace	308/308I
East and West Reading Rooms	318E, J
Graduate Student Lounge	313
Group Study Rooms	318C, D, F-I, K, L
Reading Room	318B
Scholarly Communication Services	301, 303
Seminar Room	330
Study Carrels	329
Taylor Room	321
Departmental Space	
Center for Digital Editing	302
Papers of George Washington	302
Papers of James Madison	302

4

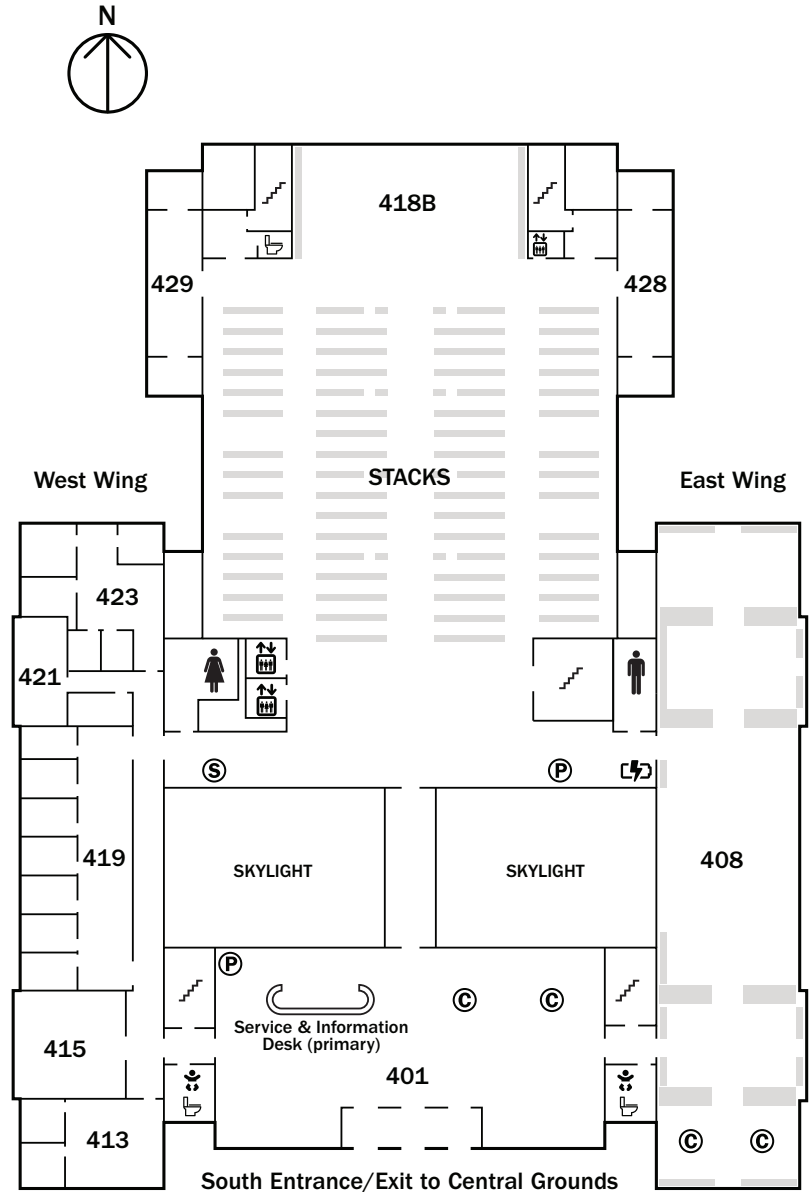
The fourth floor contains stacks, a classroom, a conference room, an open double-height reading room, and study carrels. The east wing is the References, Periodicals, & Oversize Room. The west wing is mainly staff offices. The south entrance is at this level, and brings visitors directly into the main hall (Memorial Hall), which contains the building's primary Service & Information Desk.

DIRECTORY

Classroom	415
Conference Room	421
Memorial Hall	401
Reading Room	418B
Reference, Periodicals, & Oversize	408
Service & Information Desk (primary)	401
Study Carrels	428, 429
Subject Liaison Librarians	419

Departmental Space

Information Services & Spaces	413
Research & Learning Services	423



5 The fifth floor contains stacks, conference rooms, and study carrels. In the east wing is the Office of the University Librarian and other staff space. The west wing is also mainly staff offices. In the central stacks area, a clerestory on the roof brings natural light into the building. The open north end and an aperture in the floor allow visitors to look down to the fourth floor.



DIRECTORY

Conference Rooms	515, 521, 522
------------------	---------------

Study Carrels	528, 529
---------------	----------

Departmental Space

Cross-Units Project Team	530
--------------------------	-----

Communications & User Experience	523
----------------------------------	-----

Financial Services	520
--------------------	-----

Inclusion, Diversity, Equity, & Accessibility (IDEA)	530
--	-----

Library Information Technology (LIT)	519
--------------------------------------	-----

LIT Administration	513
--------------------	-----

University Librarian's Office	508
-------------------------------	-----

